

QAQC assay batch report

Report generated on 9-Mar-2025

Batch Information

Laboratory: ALS_BRI - Despatch #: EDGI_18 - Labjob #: AD25025626 - Return date: 5-Mar-2025

Standards Statistics

Standard	Assay Field	# of Analyses above Threshold	# of Analyses below Threshold	# of Analyses outside Warning	# of Analyses outside Error
AMIS0448	Au_Au_ICP21_ppm	3	0	0	0
BEG-24	Au_Au_ICP21_ppm	5	0	0	0
GPP-14	Au_Au_ICP21_ppm	4	0	0	0
ISA-24	Au_Au_ICP21_ppm	4	0	0	0
MRCA-21	As_ME_MS61r_ppm	6	0	0	0
MRCA-21	Cu_ME_MS61r_ppm	6	0	0	0
MRCA-21	Nb_ME_MS61r_ppm	6	0	0	0
MRCA-21	Sc_ME_MS61r_ppm	6	0	0	0
MRCA-21	Ti_ME_MS61r_pct	6	0	0	0
NCSDC35011	Sn_ME_XRF15b_pct	7	0	0	0
NCSDC35012	Sn_ME_XRF15b_pct	7	0	0	0
OGAT-21	As_ME_MS61r_ppm	4	0	0	0
OGAT-21	Cu_ME_MS61r_ppm	4	0	0	0
OGAT-21	Nb_ME_MS61r_ppm	4	0	0	0
OGAT-21	Sc_ME_MS61r_ppm	4	0	0	0
OGAT-21	Ti_ME_MS61r_pct	4	0	0	0
OREAS 20b	As_ME_MS61r_ppm	4	0	0	0
OREAS 20b	Cu_ME_MS61r_ppm	4	0	0	0
OREAS 20b	Nb_ME_MS61r_ppm	4	0	0	0
OREAS 20b	Sc_ME_MS61r_ppm	4	0	0	0
OREAS 20b	Ti_ME_MS61r_pct	4	0	0	0
OREAS 242	Au_Au_ICP21_ppm	5	0	0	0
OREAS 243	As_ME_MS61r_ppm	6	0	0	0
OREAS 243	Cu_ME_MS61r_ppm	6	0	0	0
OREAS 243	Nb_ME_MS61r_ppm	6	0	0	0
OREAS 243	Sc_ME_MS61r_ppm	6	0	0	0
OREAS 243	Ti_ME_MS61r_pct	6	0	0	0
OREAS 681	Au_Au_ICP21_ppm	5	0	0	0
STD.OR-230	As_ME_MS61r_ppm	2	0	0	0
STD.OR-230	Au_Au_ICP21_ppm	2	0	0	0
STD.OR-230	Cu_ME_MS61r_ppm	2	0	0	0
STD.OR-230	Nb_ME_MS61r_ppm	2	0	0	0
STD.OR-230	Sc_ME_MS61r_ppm	2	0	0	0
STD.OR-230	Ti_ME_MS61r_pct	2	0	0	0
STD.OR-235b	As_ME_MS61r_ppm	3	0	0	0
STD.OR-235b	Au_Au_ICP21_ppm	3	0	0	0
STD.OR-235b	Cu_ME_MS61r_ppm	3	0	0	0
STD.OR-235b	Nb_ME_MS61r_ppm	3	0	0	0
STD.OR-235b	Sc_ME_MS61r_ppm	3	0	0	0
STD.OR-235b	Ti_ME_MS61r_pct	3	0	0	0
STD.OR-24d	As_ME_MS61r_ppm	4	0	0	0
STD.OR-24d	Au_Au_ICP21_ppm	4	0	4	4

Standards Statistics

Standard	Assay Field	# of Analyses above Threshold	# of Analyses below Threshold	# of Analyses outside Warning	# of Analyses outside Error
STD.OR-24d	Cu_ME_MS61r_ppm	4	0	0	0
STD.OR-24d	Nb_ME_MS61r_ppm	4	0	0	0
STD.OR-24d	Sc_ME_MS61r_ppm	4	0	0	0
STD.OR-24d	Ti_ME_MS61r_pct	4	0	0	0
STD.OR-46	As_ME_MS61r_ppm	2	0	0	0
STD.OR-46	Au_Au_ICP21_ppm	2	0	0	0
STD.OR-46	Cu_ME_MS61r_ppm	2	0	1	0
STD.OR-46	Nb_ME_MS61r_ppm	2	0	0	0
STD.OR-46	Sc_ME_MS61r_ppm	2	0	0	0
STD.OR-46	Ti_ME_MS61r_pct	2	0	0	0
STD.REN05	Sn_ME_XRF15b_pct	4	0	0	0
STD.REN06	Sn_ME_XRF15b_pct	3	0	0	0
STD.REN07	Sn_ME_XRF15b_pct	2	0	0	0
STD.REN08	Sn_ME_XRF15b_pct	3	0	0	0

Blanks Statistics

Standard	Assay Field	# of Analyses above Threshold	# of Analyses below Threshold	# of Analyses outside Warning	# of Analyses outside Error
REN_Blank	As_ME_MS61r_ppm	10	0	0	0
REN_Blank	Au_Au_ICP21_ppm	8	0	0	0
REN_Blank	Cu_ME_MS61r_ppm	11	0	0	0
REN_Blank	Nb_ME_MS61r_ppm	11	0	0	0
REN_Blank	Sc_ME_MS61r_ppm	11	0	0	0
REN_Blank	Sn_ME_XRF15b_pct	11	0	0	0
REN_Blank	Ti_ME_MS61r_pct	11	0	0	0

Duplicates/Repeats Statistics

CheckStage	Assay Field	# of Analyses above Threshold	# of Analyses below Threshold	# of Analyses outside Warning	# of Analyses outside Error
I : Instrument/Measurement Stage	As_ME_MS61r_ppm	7	1	4	3
I : Instrument/Measurement Stage	Au_Au_ICP21_ppm	0	8	0	0
I : Instrument/Measurement Stage	Cu_ME_MS61r_ppm	9	0	3	1
I : Instrument/Measurement Stage	Nb_ME_MS61r_ppm	9	0	3	2
I : Instrument/Measurement Stage	Sc_ME_MS61r_ppm	9	0	1	0
I : Instrument/Measurement Stage	Sn_ME_XRF15b_pct	1	13	0	0
I : Instrument/Measurement Stage	Ti_ME_MS61r_pct	7	2	0	0

Standards Analyses

StandardID	Assay Name	Sample ID	Duplicate Number	Assay Value	Expected Value	% Diff	QAQC Status	Import Status
AMIS0448	Au_Au_ICP21_ppm	St50:AMIS0448_25025626	LAB_STD	1.345				Pending
AMIS0448	Au_Au_ICP21_ppm	St56:AMIS0448_25025626	LAB_STD	1.35				Pending
AMIS0448	Au_Au_ICP21_ppm	St60:AMIS0448_25025626	LAB_STD	1.325				Pending
BEG-24	Au_Au_ICP21_ppm	St09:BEG-24_25025626	LAB_STD	2.54				Pending
BEG-24	Au_Au_ICP21_ppm	St15:BEG-24_25025626	LAB_STD	2.56				Pending
BEG-24	Au_Au_ICP21_ppm	St20:BEG-24_25025626	LAB_STD	2.57				Pending
BEG-24	Au_Au_ICP21_ppm	St25:BEG-24_25025626	LAB_STD	2.51				Pending
BEG-24	Au_Au_ICP21_ppm	St35:BEG-24_25025626	LAB_STD	2.49				Pending
GPP-14	Au_Au_ICP21_ppm	St40:GPP-14_25025626	LAB_STD	0.928				Pending
GPP-14	Au_Au_ICP21_ppm	St48:GPP-14_25025626	LAB_STD	1				Pending
GPP-14	Au_Au_ICP21_ppm	St51:GPP-14_25025626	LAB_STD	0.916				Pending
GPP-14	Au_Au_ICP21_ppm	St58:GPP-14_25025626	LAB_STD	0.922				Pending
ISA-24	Au_Au_ICP21_ppm	St03:ISA-24_25025626	LAB_STD	0.312				Pending
ISA-24	Au_Au_ICP21_ppm	St17:ISA-24_25025626	LAB_STD	0.317				Pending
ISA-24	Au_Au_ICP21_ppm	St24:ISA-24_25025626	LAB_STD	0.306				Pending
ISA-24	Au_Au_ICP21_ppm	St31:ISA-24_25025626	LAB_STD	0.315				Pending
MRCA-21	As_ME_MS61r_ppm	St12:MRCA-21_25025626	LAB_STD	19.1				Pending
MRCA-21	As_ME_MS61r_ppm	St26:MRCA-21_25025626	LAB_STD	20.3				Pending
MRCA-21	As_ME_MS61r_ppm	St27:MRCA-21_25025626	LAB_STD	20.1				Pending
MRCA-21	As_ME_MS61r_ppm	St28:MRCA-21_25025626	LAB_STD	20				Pending
MRCA-21	As_ME_MS61r_ppm	St29:MRCA-21_25025626	LAB_STD	17.5				Pending
MRCA-21	As_ME_MS61r_ppm	St33:MRCA-21_25025626	LAB_STD	19.4				Pending
MRCA-21	Cu_ME_MS61r_ppm	St12:MRCA-21_25025626	LAB_STD	935				Pending
MRCA-21	Cu_ME_MS61r_ppm	St26:MRCA-21_25025626	LAB_STD	968				Pending
MRCA-21	Cu_ME_MS61r_ppm	St27:MRCA-21_25025626	LAB_STD	970				Pending
MRCA-21	Cu_ME_MS61r_ppm	St28:MRCA-21_25025626	LAB_STD	933				Pending
MRCA-21	Cu_ME_MS61r_ppm	St29:MRCA-21_25025626	LAB_STD	937				Pending
MRCA-21	Cu_ME_MS61r_ppm	St33:MRCA-21_25025626	LAB_STD	946				Pending
MRCA-21	Nb_ME_MS61r_ppm	St12:MRCA-21_25025626	LAB_STD	14.1				Pending
MRCA-21	Nb_ME_MS61r_ppm	St26:MRCA-21_25025626	LAB_STD	15				Pending
MRCA-21	Nb_ME_MS61r_ppm	St27:MRCA-21_25025626	LAB_STD	15.2				Pending
MRCA-21	Nb_ME_MS61r_ppm	St28:MRCA-21_25025626	LAB_STD	13.6				Pending
MRCA-21	Nb_ME_MS61r_ppm	St29:MRCA-21_25025626	LAB_STD	13.8				Pending
MRCA-21	Nb_ME_MS61r_ppm	St33:MRCA-21_25025626	LAB_STD	14				Pending
MRCA-21	Sc_ME_MS61r_ppm	St12:MRCA-21_25025626	LAB_STD	8.6				Pending
MRCA-21	Sc_ME_MS61r_ppm	St26:MRCA-21_25025626	LAB_STD	8.9				Pending
MRCA-21	Sc_ME_MS61r_ppm	St27:MRCA-21_25025626	LAB_STD	9				Pending
MRCA-21	Sc_ME_MS61r_ppm	St28:MRCA-21_25025626	LAB_STD	8.8				Pending
MRCA-21	Sc_ME_MS61r_ppm	St29:MRCA-21_25025626	LAB_STD	8.3				Pending
MRCA-21	Sc_ME_MS61r_ppm	St33:MRCA-21_25025626	LAB_STD	8.7				Pending
MRCA-21	Ti_ME_MS61r_pct	St12:MRCA-21_25025626	LAB_STD	0.361				Pending
MRCA-21	Ti_ME_MS61r_pct	St26:MRCA-21_25025626	LAB_STD	0.38				Pending
MRCA-21	Ti_ME_MS61r_pct	St27:MRCA-21_25025626	LAB_STD	0.381				Pending
MRCA-21	Ti_ME_MS61r_pct	St28:MRCA-21_25025626	LAB_STD	0.361				Pending
MRCA-21	Ti_ME_MS61r_pct	St29:MRCA-21_25025626	LAB_STD	0.355				Pending
MRCA-21	Ti_ME_MS61r_pct	St33:MRCA-21_25025626	LAB_STD	0.374				Pending
NCSDC35011	Sn_ME_XRF15b_pct	St01:NCSDC35011_25025626	LAB_STD	0.747				Pending
NCSDC35011	Sn_ME_XRF15b_pct	St04:NCSDC35011_25025626	LAB_STD	0.739				Pending
NCSDC35011	Sn_ME_XRF15b_pct	St05:NCSDC35011_25025626	LAB_STD	0.733				Pending
NCSDC35011	Sn_ME_XRF15b_pct	St06:NCSDC35011_25025626	LAB_STD	0.744				Pending
NCSDC35011	Sn_ME_XRF15b_pct	St10:NCSDC35011_25025626	LAB_STD	0.74				Pending
NCSDC35011	Sn_ME_XRF15b_pct	St21:NCSDC35011_25025626	LAB_STD	0.753				Pending
NCSDC35011	Sn_ME_XRF15b_pct	St22:NCSDC35011_25025626	LAB_STD	0.74				Pending
NCSDC35012	Sn_ME_XRF15b_pct	St37:NCSDC35012_25025626	LAB_STD	3.98				Pending
NCSDC35012	Sn_ME_XRF15b_pct	St42:NCSDC35012_25025626	LAB_STD	3.99				Pending
NCSDC35012	Sn_ME_XRF15b_pct	St43:NCSDC35012_25025626	LAB_STD	3.98				Pending
NCSDC35012	Sn_ME_XRF15b_pct	St44:NCSDC35012_25025626	LAB_STD	3.95				Pending
NCSDC35012	Sn_ME_XRF15b_pct	St45:NCSDC35012_25025626	LAB_STD	4				Pending
NCSDC35012	Sn_ME_XRF15b_pct	St46:NCSDC35012_25025626	LAB_STD	3.99				Pending
NCSDC35012	Sn_ME_XRF15b_pct	St47:NCSDC35012_25025626	LAB_STD	3.97				Pending
OGAT-21	As_ME_MS61r_ppm	St30:OGAT-21_25025626	LAB_STD	550				Pending
OGAT-21	As_ME_MS61r_ppm	St32:OGAT-21_25025626	LAB_STD	558				Pending
OGAT-21	As_ME_MS61r_ppm	St34:OGAT-21_25025626	LAB_STD	548				Pending
OGAT-21	As_ME_MS61r_ppm	St36:OGAT-21_25025626	LAB_STD	526				Pending
OGAT-21	Cu_ME_MS61r_ppm	St30:OGAT-21_25025626	LAB_STD	7540				Pending
OGAT-21	Cu_ME_MS61r_ppm	St32:OGAT-21_25025626	LAB_STD	7650				Pending
OGAT-21	Cu_ME_MS61r_ppm	St34:OGAT-21_25025626	LAB_STD	7490				Pending
OGAT-21	Cu_ME_MS61r_ppm	St36:OGAT-21_25025626	LAB_STD	7520				Pending
OGAT-21	Nb_ME_MS61r_ppm	St30:OGAT-21_25025626	LAB_STD	7.4				Pending
OGAT-21	Nb_ME_MS61r_ppm	St32:OGAT-21_25025626	LAB_STD	7.7				Pending
OGAT-21	Nb_ME_MS61r_ppm	St34:OGAT-21_25025626	LAB_STD	7.4				Pending
OGAT-21	Nb_ME_MS61r_ppm	St36:OGAT-21_25025626	LAB_STD	7				Pending
OGAT-21	Sc_ME_MS61r_ppm	St30:OGAT-21_25025626	LAB_STD	5.1				Pending
OGAT-21	Sc_ME_MS61r_ppm	St32:OGAT-21_25025626	LAB_STD	5.6				Pending

Standards Analyses

StandardID	Assay Name	Sample ID	Duplicate Number	Assay Value	Expected Value	% Diff	QAQC Status	Import Status
OGAT-21	Sc_ME_MS61r_ppm	St34:OGAT-21_25025626	LAB_STD	5.4				Pending
OGAT-21	Sc_ME_MS61r_ppm	St36:OGAT-21_25025626	LAB_STD	4.8				Pending
OGAT-21	Ti_ME_MS61r_pct	St30:OGAT-21_25025626	LAB_STD	0.208				Pending
OGAT-21	Ti_ME_MS61r_pct	St32:OGAT-21_25025626	LAB_STD	0.21				Pending
OGAT-21	Ti_ME_MS61r_pct	St34:OGAT-21_25025626	LAB_STD	0.208				Pending
OGAT-21	Ti_ME_MS61r_pct	St36:OGAT-21_25025626	LAB_STD	0.205				Pending
OREAS 20b	As_ME_MS61r_ppm	St07:OREAS 20b_25025626	LAB_STD	2.3				Pending
OREAS 20b	As_ME_MS61r_ppm	St08:OREAS 20b_25025626	LAB_STD	1.6				Pending
OREAS 20b	As_ME_MS61r_ppm	St11:OREAS 20b_25025626	LAB_STD	2.6				Pending
OREAS 20b	As_ME_MS61r_ppm	St16:OREAS 20b_25025626	LAB_STD	2				Pending
OREAS 20b	Cu_ME_MS61r_ppm	St07:OREAS 20b_25025626	LAB_STD	22.3				Pending
OREAS 20b	Cu_ME_MS61r_ppm	St08:OREAS 20b_25025626	LAB_STD	21.5				Pending
OREAS 20b	Cu_ME_MS61r_ppm	St11:OREAS 20b_25025626	LAB_STD	23.6				Pending
OREAS 20b	Cu_ME_MS61r_ppm	St16:OREAS 20b_25025626	LAB_STD	21.2				Pending
OREAS 20b	Nb_ME_MS61r_ppm	St07:OREAS 20b_25025626	LAB_STD	13.7				Pending
OREAS 20b	Nb_ME_MS61r_ppm	St08:OREAS 20b_25025626	LAB_STD	14				Pending
OREAS 20b	Nb_ME_MS61r_ppm	St11:OREAS 20b_25025626	LAB_STD	14.1				Pending
OREAS 20b	Nb_ME_MS61r_ppm	St16:OREAS 20b_25025626	LAB_STD	13.9				Pending
OREAS 20b	Sc_ME_MS61r_ppm	St07:OREAS 20b_25025626	LAB_STD	8.9				Pending
OREAS 20b	Sc_ME_MS61r_ppm	St08:OREAS 20b_25025626	LAB_STD	8.8				Pending
OREAS 20b	Sc_ME_MS61r_ppm	St11:OREAS 20b_25025626	LAB_STD	9				Pending
OREAS 20b	Sc_ME_MS61r_ppm	St16:OREAS 20b_25025626	LAB_STD	8.8				Pending
OREAS 20b	Ti_ME_MS61r_pct	St07:OREAS 20b_25025626	LAB_STD	0.372				Pending
OREAS 20b	Ti_ME_MS61r_pct	St08:OREAS 20b_25025626	LAB_STD	0.363				Pending
OREAS 20b	Ti_ME_MS61r_pct	St11:OREAS 20b_25025626	LAB_STD	0.388				Pending
OREAS 20b	Ti_ME_MS61r_pct	St16:OREAS 20b_25025626	LAB_STD	0.37				Pending
OREAS 242	Au_Au_ICP21_ppm	St39:OREAS 242_25025626	LAB_STD	8.7				Pending
OREAS 242	Au_Au_ICP21_ppm	St54:OREAS 242_25025626	LAB_STD	8.38				Pending
OREAS 242	Au_Au_ICP21_ppm	St55:OREAS 242_25025626	LAB_STD	8.67				Pending
OREAS 242	Au_Au_ICP21_ppm	St57:OREAS 242_25025626	LAB_STD	8.68				Pending
OREAS 242	Au_Au_ICP21_ppm	St59:OREAS 242_25025626	LAB_STD	8.84				Pending
OREAS 243	As_ME_MS61r_ppm	St02:OREAS 243_25025626	LAB_STD	86.9				Pending
OREAS 243	As_ME_MS61r_ppm	St13:OREAS 243_25025626	LAB_STD	82.8				Pending
OREAS 243	As_ME_MS61r_ppm	St14:OREAS 243_25025626	LAB_STD	91.6				Pending
OREAS 243	As_ME_MS61r_ppm	St18:OREAS 243_25025626	LAB_STD	89.7				Pending
OREAS 243	As_ME_MS61r_ppm	St19:OREAS 243_25025626	LAB_STD	87.8				Pending
OREAS 243	As_ME_MS61r_ppm	St23:OREAS 243_25025626	LAB_STD	80.4				Pending
OREAS 243	Cu_ME_MS61r_ppm	St02:OREAS 243_25025626	LAB_STD	175.5				Pending
OREAS 243	Cu_ME_MS61r_ppm	St13:OREAS 243_25025626	LAB_STD	176				Pending
OREAS 243	Cu_ME_MS61r_ppm	St14:OREAS 243_25025626	LAB_STD	177.5				Pending
OREAS 243	Cu_ME_MS61r_ppm	St18:OREAS 243_25025626	LAB_STD	179.5				Pending
OREAS 243	Cu_ME_MS61r_ppm	St19:OREAS 243_25025626	LAB_STD	173.5				Pending
OREAS 243	Cu_ME_MS61r_ppm	St23:OREAS 243_25025626	LAB_STD	168.5				Pending
OREAS 243	Nb_ME_MS61r_ppm	St02:OREAS 243_25025626	LAB_STD	3.7				Pending
OREAS 243	Nb_ME_MS61r_ppm	St13:OREAS 243_25025626	LAB_STD	3.7				Pending
OREAS 243	Nb_ME_MS61r_ppm	St14:OREAS 243_25025626	LAB_STD	3.7				Pending
OREAS 243	Nb_ME_MS61r_ppm	St18:OREAS 243_25025626	LAB_STD	3.6				Pending
OREAS 243	Nb_ME_MS61r_ppm	St19:OREAS 243_25025626	LAB_STD	3.6				Pending
OREAS 243	Nb_ME_MS61r_ppm	St23:OREAS 243_25025626	LAB_STD	3.4				Pending
OREAS 243	Sc_ME_MS61r_ppm	St02:OREAS 243_25025626	LAB_STD	38.4				Pending
OREAS 243	Sc_ME_MS61r_ppm	St13:OREAS 243_25025626	LAB_STD	35.8				Pending
OREAS 243	Sc_ME_MS61r_ppm	St14:OREAS 243_25025626	LAB_STD	37.3				Pending
OREAS 243	Sc_ME_MS61r_ppm	St18:OREAS 243_25025626	LAB_STD	36.3				Pending
OREAS 243	Sc_ME_MS61r_ppm	St19:OREAS 243_25025626	LAB_STD	34.3				Pending
OREAS 243	Sc_ME_MS61r_ppm	St23:OREAS 243_25025626	LAB_STD	33.6				Pending
OREAS 243	Ti_ME_MS61r_pct	St02:OREAS 243_25025626	LAB_STD	0.583				Pending
OREAS 243	Ti_ME_MS61r_pct	St13:OREAS 243_25025626	LAB_STD	0.599				Pending
OREAS 243	Ti_ME_MS61r_pct	St14:OREAS 243_25025626	LAB_STD	0.602				Pending
OREAS 243	Ti_ME_MS61r_pct	St18:OREAS 243_25025626	LAB_STD	0.6				Pending
OREAS 243	Ti_ME_MS61r_pct	St19:OREAS 243_25025626	LAB_STD	0.594				Pending
OREAS 243	Ti_ME_MS61r_pct	St23:OREAS 243_25025626	LAB_STD	0.58				Pending
OREAS 681	Au_Au_ICP21_ppm	St38:OREAS 681_25025626	LAB_STD	0.052				Pending
OREAS 681	Au_Au_ICP21_ppm	St41:OREAS 681_25025626	LAB_STD	0.051				Pending
OREAS 681	Au_Au_ICP21_ppm	St49:OREAS 681_25025626	LAB_STD	0.052				Pending
OREAS 681	Au_Au_ICP21_ppm	St52:OREAS 681_25025626	LAB_STD	0.051				Pending
OREAS 681	Au_Au_ICP21_ppm	St53:OREAS 681_25025626	LAB_STD	0.05				Pending
STD.OR-230	As_ME_MS61r_ppm	RDD284866	STD	19.2	17.3	10.98%		Pending
STD.OR-230	As_ME_MS61r_ppm	RDD284966	STD	18.2	17.3	5.20%		Pending
STD.OR-230	Au_Au_ICP21_ppm	RDD284866	STD	0.336	0.337	-0.30%		Pending
STD.OR-230	Au_Au_ICP21_ppm	RDD284966	STD	0.326	0.337	-3.26%		Pending
STD.OR-230	Cu_ME_MS61r_ppm	RDD284866	STD	166.5	169	-1.48%		Pending
STD.OR-230	Cu_ME_MS61r_ppm	RDD284966	STD	175.5	169	3.85%		Pending
STD.OR-230	Nb_ME_MS61r_ppm	RDD284866	STD	3.3	3.39	-2.65%		Pending
STD.OR-230	Nb_ME_MS61r_ppm	RDD284966	STD	3.4	3.39	0.29%		Pending

Standards Analyses

StandardID	Assay Name	Sample ID	Duplicate Number	Assay Value	Expected Value	% Diff	QAQC Status	Import Status
STD.OR-230	Sc_ME_MS61r_ppm	RDD284866	STD	43.7	43.7	0.00%		Pending
STD.OR-230	Sc_ME_MS61r_ppm	RDD284966	STD	45.8	43.7	4.81%		Pending
STD.OR-230	Ti_ME_MS61r_pct	RDD284866	STD	0.596	0.639	-6.73%		Pending
STD.OR-230	Ti_ME_MS61r_pct	RDD284966	STD	0.628	0.639	-1.72%		Pending
STD.OR-235b	As_ME_MS61r_ppm	RDD284816	STD	330	353	-6.52%		Pending
STD.OR-235b	As_ME_MS61r_ppm	RDD284841	STD	361	353	2.27%		Pending
STD.OR-235b	As_ME_MS61r_ppm	RDD284891	STD	351	353	-0.57%		Pending
STD.OR-235b	Au_Au_ICP21_ppm	RDD284816	STD	1.69	1.63	3.68%		Pending
STD.OR-235b	Au_Au_ICP21_ppm	RDD284841	STD	1.695	1.63	3.99%		Pending
STD.OR-235b	Au_Au_ICP21_ppm	RDD284891	STD	1.655	1.63	1.53%		Pending
STD.OR-235b	Cu_ME_MS61r_ppm	RDD284816	STD	27.2	29.3	-7.17%		Pending
STD.OR-235b	Cu_ME_MS61r_ppm	RDD284841	STD	29.7	29.3	1.37%		Pending
STD.OR-235b	Cu_ME_MS61r_ppm	RDD284891	STD	30	29.3	2.39%		Pending
STD.OR-235b	Nb_ME_MS61r_ppm	RDD284816	STD	15.4	15.8	-2.53%		Pending
STD.OR-235b	Nb_ME_MS61r_ppm	RDD284841	STD	15.7	15.8	-0.63%		Pending
STD.OR-235b	Nb_ME_MS61r_ppm	RDD284891	STD	17	15.8	7.59%		Pending
STD.OR-235b	Sc_ME_MS61r_ppm	RDD284816	STD	13.9	14.7	-5.44%		Pending
STD.OR-235b	Sc_ME_MS61r_ppm	RDD284841	STD	15	14.7	2.04%		Pending
STD.OR-235b	Sc_ME_MS61r_ppm	RDD284891	STD	16	14.7	8.84%		Pending
STD.OR-235b	Ti_ME_MS61r_pct	RDD284816	STD	0.496	0.489	1.43%		Pending
STD.OR-235b	Ti_ME_MS61r_pct	RDD284841	STD	0.502	0.489	2.66%		Pending
STD.OR-235b	Ti_ME_MS61r_pct	RDD284891	STD	0.491	0.489	0.41%		Pending
STD.OR-24d	As_ME_MS61r_ppm	RDD284941	STD	1.1	1.35	-18.52%		Pending
STD.OR-24d	As_ME_MS61r_ppm	RDD284991	STD	1	1.35	-25.93%		Pending
STD.OR-24d	As_ME_MS61r_ppm	RDD285016	STD	1.2	1.35	-11.11%		Pending
STD.OR-24d	As_ME_MS61r_ppm	RDD285066	STD	2	1.35	48.15%		Pending
STD.OR-24d	Au_Au_ICP21_ppm	RDD284941	STD	0.002	0.001	100.00%	Error	Pending
STD.OR-24d	Au_Au_ICP21_ppm	RDD284991	STD	0.002	0.001	100.00%	Error	Pending
STD.OR-24d	Au_Au_ICP21_ppm	RDD285016	STD	0.002	0.001	100.00%	Error	Pending
STD.OR-24d	Au_Au_ICP21_ppm	RDD285066	STD	0.002	0.001	100.00%	Error	Pending
STD.OR-24d	Cu_ME_MS61r_ppm	RDD284941	STD	44.7	43.2	3.47%		Pending
STD.OR-24d	Cu_ME_MS61r_ppm	RDD284991	STD	43.6	43.2	0.93%		Pending
STD.OR-24d	Cu_ME_MS61r_ppm	RDD285016	STD	40.4	43.2	-6.48%		Pending
STD.OR-24d	Cu_ME_MS61r_ppm	RDD285066	STD	43.7	43.2	1.16%		Pending
STD.OR-24d	Nb_ME_MS61r_ppm	RDD284941	STD	47.9	44.6	7.40%		Pending
STD.OR-24d	Nb_ME_MS61r_ppm	RDD284991	STD	44.3	44.6	-0.67%		Pending
STD.OR-24d	Nb_ME_MS61r_ppm	RDD285016	STD	45.9	44.6	2.91%		Pending
STD.OR-24d	Nb_ME_MS61r_ppm	RDD285066	STD	46.2	44.6	3.59%		Pending
STD.OR-24d	Sc_ME_MS61r_ppm	RDD284941	STD	21.6	20	8.00%		Pending
STD.OR-24d	Sc_ME_MS61r_ppm	RDD284991	STD	20.6	20	3.00%		Pending
STD.OR-24d	Sc_ME_MS61r_ppm	RDD285016	STD	20.1	20	0.50%		Pending
STD.OR-24d	Sc_ME_MS61r_ppm	RDD285066	STD	19.2	20	-4.00%		Pending
STD.OR-24d	Ti_ME_MS61r_pct	RDD284941	STD	1.21	1.22	-0.82%		Pending
STD.OR-24d	Ti_ME_MS61r_pct	RDD284991	STD	1.205	1.22	-1.23%		Pending
STD.OR-24d	Ti_ME_MS61r_pct	RDD285016	STD	1.17	1.22	-4.10%		Pending
STD.OR-24d	Ti_ME_MS61r_pct	RDD285066	STD	1.2	1.22	-1.64%		Pending
STD.OR-46	As_ME_MS61r_ppm	RDD284916	STD	0.6	1.01	-40.59%		Pending
STD.OR-46	As_ME_MS61r_ppm	RDD285041	STD	0.7	1.01	-30.69%		Pending
STD.OR-46	Au_Au_ICP21_ppm	RDD284916	STD	0.002	0.002	0.00%		Pending
STD.OR-46	Au_Au_ICP21_ppm	RDD285041	STD	0.004	0.002	100.00%		Pending
STD.OR-46	Cu_ME_MS61r_ppm	RDD284916	STD	22.8	23.1	-1.30%		Pending
STD.OR-46	Cu_ME_MS61r_ppm	RDD285041	STD	21.3	23.1	-7.79%	Warning	Pending
STD.OR-46	Nb_ME_MS61r_ppm	RDD284916	STD	4.6	4.56	0.88%		Pending
STD.OR-46	Nb_ME_MS61r_ppm	RDD285041	STD	4.8	4.56	5.26%		Pending
STD.OR-46	Sc_ME_MS61r_ppm	RDD284916	STD	8.6	8.75	-1.71%		Pending
STD.OR-46	Sc_ME_MS61r_ppm	RDD285041	STD	8.5	8.75	-2.86%		Pending
STD.OR-46	Ti_ME_MS61r_pct	RDD284916	STD	0.207	0.207	0.00%		Pending
STD.OR-46	Ti_ME_MS61r_pct	RDD285041	STD	0.205	0.207	-0.97%		Pending
STD.REN05	Sn_ME_XRF15b_pct	RDD284865	STD	2.65	2.68	-1.12%		Pending
STD.REN05	Sn_ME_XRF15b_pct	RDD284890	STD	2.63	2.68	-1.87%		Pending
STD.REN05	Sn_ME_XRF15b_pct	RDD284940	STD	2.63	2.68	-1.87%		Pending
STD.REN05	Sn_ME_XRF15b_pct	RDD284990	STD	2.65	2.68	-1.12%		Pending
STD.REN06	Sn_ME_XRF15b_pct	RDD284915	STD	2.52	2.54	-0.79%		Pending
STD.REN06	Sn_ME_XRF15b_pct	RDD284965	STD	2.52	2.54	-0.79%		Pending
STD.REN06	Sn_ME_XRF15b_pct	RDD285065	STD	2.5	2.54	-1.57%		Pending
STD.REN07	Sn_ME_XRF15b_pct	RDD284815	STD	1.18	1.17	0.85%		Pending
STD.REN07	Sn_ME_XRF15b_pct	RDD285015	STD	1.16	1.17	-0.85%		Pending
STD.REN08	Sn_ME_XRF15b_pct	RDD284840	STD	1.125	1.12	0.45%		Pending
STD.REN08	Sn_ME_XRF15b_pct	RDD285040	STD	1.12	1.12	0.00%		Pending
STD.REN08	Sn_ME_XRF15b_pct	RDD285090	STD	1.12	1.12	0.00%		Pending

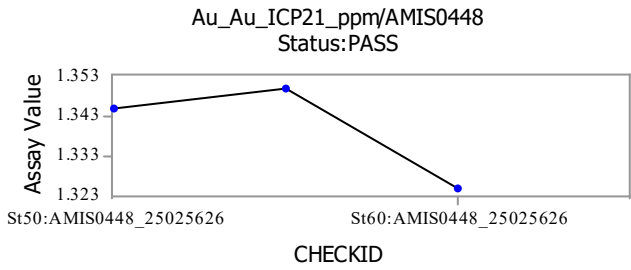
Blanks Analyses

StandardID	Assay Name	Sample ID	Duplicate Number	Assay Value	Expected Value	% Diff	QAQC Status	Import Status
REN_Blank	As_ME_MS61r_ppm	RDD284820	BLK	1.2				Pending
REN_Blank	As_ME_MS61r_ppm	RDD284848	BLK	0.7				Pending
REN_Blank	As_ME_MS61r_ppm	RDD284877	BLK	2.3				Pending
REN_Blank	As_ME_MS61r_ppm	RDD284886	BLK	1.6				Pending
REN_Blank	As_ME_MS61r_ppm	RDD284918	BLK	1.6				Pending
REN_Blank	As_ME_MS61r_ppm	RDD284938	BLK	0.4				Pending
REN_Blank	As_ME_MS61r_ppm	RDD284972	BLK	0.3				Pending
REN_Blank	As_ME_MS61r_ppm	RDD285004	BLK	1.2				Pending
REN_Blank	As_ME_MS61r_ppm	RDD285023	BLK	3.1				Pending
REN_Blank	As_ME_MS61r_ppm	RDD285048	BLK	2				Pending
REN_Blank	Au_Au_ICP21_ppm	RDD284877	BLK	0.001				Pending
REN_Blank	Au_Au_ICP21_ppm	RDD284918	BLK	0.001				Pending
REN_Blank	Au_Au_ICP21_ppm	RDD284938	BLK	0.001				Pending
REN_Blank	Au_Au_ICP21_ppm	RDD284948	BLK	0.002				Pending
REN_Blank	Au_Au_ICP21_ppm	RDD284972	BLK	0.001				Pending
REN_Blank	Au_Au_ICP21_ppm	RDD285004	BLK	0.002				Pending
REN_Blank	Au_Au_ICP21_ppm	RDD285023	BLK	0.001				Pending
REN_Blank	Au_Au_ICP21_ppm	RDD285048	BLK	0.001				Pending
REN_Blank	Cu_ME_MS61r_ppm	RDD284820	BLK	3.3				Pending
REN_Blank	Cu_ME_MS61r_ppm	RDD284848	BLK	3.2				Pending
REN_Blank	Cu_ME_MS61r_ppm	RDD284877	BLK	2.6				Pending
REN_Blank	Cu_ME_MS61r_ppm	RDD284886	BLK	2.2				Pending
REN_Blank	Cu_ME_MS61r_ppm	RDD284918	BLK	3.1				Pending
REN_Blank	Cu_ME_MS61r_ppm	RDD284938	BLK	2.3				Pending
REN_Blank	Cu_ME_MS61r_ppm	RDD284948	BLK	2.3				Pending
REN_Blank	Cu_ME_MS61r_ppm	RDD284972	BLK	2.3				Pending
REN_Blank	Cu_ME_MS61r_ppm	RDD285004	BLK	2.8				Pending
REN_Blank	Cu_ME_MS61r_ppm	RDD285023	BLK	3.7				Pending
REN_Blank	Cu_ME_MS61r_ppm	RDD285048	BLK	2.5				Pending
REN_Blank	Nb_ME_MS61r_ppm	RDD284820	BLK	1.5				Pending
REN_Blank	Nb_ME_MS61r_ppm	RDD284848	BLK	1.1				Pending
REN_Blank	Nb_ME_MS61r_ppm	RDD284877	BLK	1.2				Pending
REN_Blank	Nb_ME_MS61r_ppm	RDD284886	BLK	1.4				Pending
REN_Blank	Nb_ME_MS61r_ppm	RDD284918	BLK	1.3				Pending
REN_Blank	Nb_ME_MS61r_ppm	RDD284938	BLK	1.3				Pending
REN_Blank	Nb_ME_MS61r_ppm	RDD284948	BLK	1.4				Pending
REN_Blank	Nb_ME_MS61r_ppm	RDD284972	BLK	1.1				Pending
REN_Blank	Nb_ME_MS61r_ppm	RDD285004	BLK	1.8				Pending
REN_Blank	Nb_ME_MS61r_ppm	RDD285023	BLK	2.7				Pending
REN_Blank	Nb_ME_MS61r_ppm	RDD285048	BLK	1.1				Pending
REN_Blank	Sc_ME_MS61r_ppm	RDD284820	BLK	0.4				Pending
REN_Blank	Sc_ME_MS61r_ppm	RDD284848	BLK	0.2				Pending
REN_Blank	Sc_ME_MS61r_ppm	RDD284877	BLK	0.1				Pending
REN_Blank	Sc_ME_MS61r_ppm	RDD284886	BLK	0.2				Pending
REN_Blank	Sc_ME_MS61r_ppm	RDD284918	BLK	0.3				Pending
REN_Blank	Sc_ME_MS61r_ppm	RDD284938	BLK	0.3				Pending
REN_Blank	Sc_ME_MS61r_ppm	RDD284948	BLK	0.2				Pending
REN_Blank	Sc_ME_MS61r_ppm	RDD284972	BLK	0.1				Pending
REN_Blank	Sc_ME_MS61r_ppm	RDD285004	BLK	0.2				Pending
REN_Blank	Sc_ME_MS61r_ppm	RDD285023	BLK	0.4				Pending
REN_Blank	Sc_ME_MS61r_ppm	RDD285048	BLK	0.2				Pending
REN_Blank	Sn_ME_XRF15b_pct	RDD284820	BLK	0.0025	0	Error!		Pending
REN_Blank	Sn_ME_XRF15b_pct	RDD284848	BLK	0.0025	0	Error!		Pending
REN_Blank	Sn_ME_XRF15b_pct	RDD284877	BLK	0.0025	0	Error!		Pending
REN_Blank	Sn_ME_XRF15b_pct	RDD284886	BLK	0.0025	0	Error!		Pending
REN_Blank	Sn_ME_XRF15b_pct	RDD284918	BLK	0.0025	0	Error!		Pending
REN_Blank	Sn_ME_XRF15b_pct	RDD284938	BLK	0.0025	0	Error!		Pending
REN_Blank	Sn_ME_XRF15b_pct	RDD284948	BLK	0.0025	0	Error!		Pending
REN_Blank	Sn_ME_XRF15b_pct	RDD284972	BLK	0.0025	0	Error!		Pending
REN_Blank	Sn_ME_XRF15b_pct	RDD285004	BLK	0.0025	0	Error!		Pending
REN_Blank	Sn_ME_XRF15b_pct	RDD285023	BLK	0.0025	0	Error!		Pending
REN_Blank	Sn_ME_XRF15b_pct	RDD285048	BLK	0.0025	0	Error!		Pending
REN_Blank	Ti_ME_MS61r_pct	RDD284820	BLK	0.064				Pending
REN_Blank	Ti_ME_MS61r_pct	RDD284848	BLK	0.05				Pending
REN_Blank	Ti_ME_MS61r_pct	RDD284877	BLK	0.049				Pending
REN_Blank	Ti_ME_MS61r_pct	RDD284886	BLK	0.054				Pending
REN_Blank	Ti_ME_MS61r_pct	RDD284918	BLK	0.055				Pending
REN_Blank	Ti_ME_MS61r_pct	RDD284938	BLK	0.051				Pending
REN_Blank	Ti_ME_MS61r_pct	RDD284948	BLK	0.055				Pending
REN_Blank	Ti_ME_MS61r_pct	RDD284972	BLK	0.048				Pending
REN_Blank	Ti_ME_MS61r_pct	RDD285004	BLK	0.076				Pending
REN_Blank	Ti_ME_MS61r_pct	RDD285023	BLK	0.113				Pending
REN_Blank	Ti_ME_MS61r_pct	RDD285048	BLK	0.044				Pending

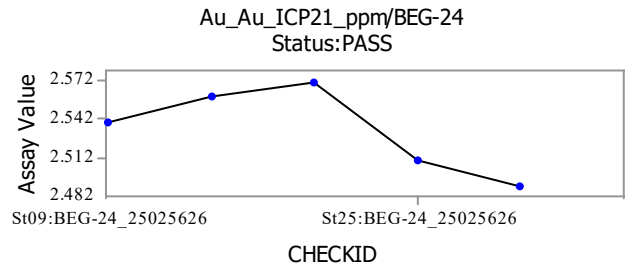
Duplicates/Repeats Analyses

Check Stage	Assay Name	Sample ID	Assay Value	Check ID	Duplicate Number	Check Value	MAPD	QAQC Status	Import Status
I	As_ME_MS61r_ppm	RDD284794	83.2	Ch:RDD284794	EDGI_18	84.9	2.02%		Pending
I	As_ME_MS61r_ppm	RDD284831	18	Ch:RDD284831	EDGI_18	15.8	13.02%	Error	Pending
I	As_ME_MS61r_ppm	RDD284869	20	Ch:RDD284869	EDGI_18	20.4	1.98%		Pending
I	As_ME_MS61r_ppm	RDD284906	12.6	Ch:RDD284906	EDGI_18	13.2	4.65%		Pending
I	As_ME_MS61r_ppm	RDD284944	25	Ch:RDD284944	EDGI_18	21.7	14.13%	Error	Pending
I	As_ME_MS61r_ppm	RDD285019	0.8	Ch:RDD285019	EDGI_18	0.9			Pending
I	As_ME_MS61r_ppm	RDD285056	41.5	Ch:RDD285056	EDGI_18	38.7	6.98%	Warning	Pending
I	As_ME_MS61r_ppm	RDD285085	1	Ch:RDD285085	EDGI_18	0.4	85.71%	Error	Pending
I	Au_Au_ICP21_ppm	RDD284839	0.002	Ch:RDD284839	EDGI_18	0.002			Pending
I	Au_Au_ICP21_ppm	RDD284861	0.001	Ch:RDD284861	EDGI_18	0.001			Pending
I	Au_Au_ICP21_ppm	RDD284882	0.001	Ch:RDD284882	EDGI_18	0.001			Pending
I	Au_Au_ICP21_ppm	RDD284938	0.001	Ch:RDD284938	EDGI_18	0.001			Pending
I	Au_Au_ICP21_ppm	RDD284987	0.001	Ch:RDD284987	EDGI_18	0.001			Pending
I	Au_Au_ICP21_ppm	RDD284998	0.001	Ch:RDD284998	EDGI_18	0.001			Pending
I	Au_Au_ICP21_ppm	RDD285019	0.001	Ch:RDD285019	EDGI_18	0.001			Pending
I	Au_Au_ICP21_ppm	RDD285078	0.001	Ch:RDD285078	EDGI_18	0.001			Pending
I	Cu_ME_MS61r_ppm	RDD284794	124	Ch:RDD284794	EDGI_18	123	0.81%		Pending
I	Cu_ME_MS61r_ppm	RDD284831	92.5	Ch:RDD284831	EDGI_18	87.8	5.21%	Warning	Pending
I	Cu_ME_MS61r_ppm	RDD284869	5.2	Ch:RDD284869	EDGI_18	5.4	3.77%		Pending
I	Cu_ME_MS61r_ppm	RDD284906	108.5	Ch:RDD284906	EDGI_18	109	0.46%		Pending
I	Cu_ME_MS61r_ppm	RDD284944	49.4	Ch:RDD284944	EDGI_18	48.1	2.67%		Pending
I	Cu_ME_MS61r_ppm	RDD284981	1.2	Ch:RDD284981	EDGI_18	1	18.18%	Error	Pending
I	Cu_ME_MS61r_ppm	RDD285019	3.3	Ch:RDD285019	EDGI_18	3.3			Pending
I	Cu_ME_MS61r_ppm	RDD285056	12.3	Ch:RDD285056	EDGI_18	11.5	6.72%	Warning	Pending
I	Cu_ME_MS61r_ppm	RDD285085	3	Ch:RDD285085	EDGI_18	3			Pending
I	Nb_ME_MS61r_ppm	RDD284794	17.4	Ch:RDD284794	EDGI_18	17.6	1.14%		Pending
I	Nb_ME_MS61r_ppm	RDD284831	16.7	Ch:RDD284831	EDGI_18	15.7	6.17%	Warning	Pending
I	Nb_ME_MS61r_ppm	RDD284869	6.7	Ch:RDD284869	EDGI_18	6.9	2.94%		Pending
I	Nb_ME_MS61r_ppm	RDD284906	25.9	Ch:RDD284906	EDGI_18	26.5	2.29%		Pending
I	Nb_ME_MS61r_ppm	RDD284944	28.6	Ch:RDD284944	EDGI_18	28.3	1.05%		Pending
I	Nb_ME_MS61r_ppm	RDD284981	8.4	Ch:RDD284981	EDGI_18	8.8	4.65%		Pending
I	Nb_ME_MS61r_ppm	RDD285019	0.6	Ch:RDD285019	EDGI_18	0.7	15.38%	Error	Pending
I	Nb_ME_MS61r_ppm	RDD285056	34.1	Ch:RDD285056	EDGI_18	34.4	0.88%		Pending
I	Nb_ME_MS61r_ppm	RDD285085	0.8	Ch:RDD285085	EDGI_18	0.9	11.76%	Error	Pending
I	Sc_ME_MS61r_ppm	RDD284794	25.9	Ch:RDD284794	EDGI_18	26.3	1.53%		Pending
I	Sc_ME_MS61r_ppm	RDD284831	28.8	Ch:RDD284831	EDGI_18	26.7	7.57%	Warning	Pending
I	Sc_ME_MS61r_ppm	RDD284869	7.9	Ch:RDD284869	EDGI_18	8.1	2.50%		Pending
I	Sc_ME_MS61r_ppm	RDD284906	27	Ch:RDD284906	EDGI_18	27.2	0.74%		Pending
I	Sc_ME_MS61r_ppm	RDD284944	15.1	Ch:RDD284944	EDGI_18	14.5	4.05%		Pending
I	Sc_ME_MS61r_ppm	RDD284981	11	Ch:RDD284981	EDGI_18	11.3	2.69%		Pending
I	Sc_ME_MS61r_ppm	RDD285019	0.6	Ch:RDD285019	EDGI_18	0.6			Pending
I	Sc_ME_MS61r_ppm	RDD285056	10.9	Ch:RDD285056	EDGI_18	10.7	1.85%		Pending
I	Sc_ME_MS61r_ppm	RDD285085	0.5	Ch:RDD285085	EDGI_18	0.5			Pending
I	Sn_ME_XRF15b_pct	RDD284800	0.0025	Ch:RDD284800	EDGI_18	0.0025			Pending
I	Sn_ME_XRF15b_pct	RDD284821	0.0025	Ch:RDD284821	EDGI_18	0.0025			Pending
I	Sn_ME_XRF15b_pct	RDD284845	0.0025	Ch:RDD284845	EDGI_18	0.006			Pending
I	Sn_ME_XRF15b_pct	RDD284865	2.65	Ch:RDD284865	EDGI_18	2.66	0.38%		Pending
I	Sn_ME_XRF15b_pct	RDD284889	0.008	Ch:RDD284889	EDGI_18	0.008			Pending
I	Sn_ME_XRF15b_pct	RDD284910	0.01	Ch:RDD284910	EDGI_18	0.009			Pending
I	Sn_ME_XRF15b_pct	RDD284934	0.013	Ch:RDD284934	EDGI_18	0.013			Pending
I	Sn_ME_XRF15b_pct	RDD284955	0.007	Ch:RDD284955	EDGI_18	0.009			Pending
I	Sn_ME_XRF15b_pct	RDD284979	0.02	Ch:RDD284979	EDGI_18	0.018			Pending
I	Sn_ME_XRF15b_pct	RDD285000	0.01	Ch:RDD285000	EDGI_18	0.013			Pending
I	Sn_ME_XRF15b_pct	RDD285024	0.0025	Ch:RDD285024	EDGI_18	0.005			Pending
I	Sn_ME_XRF15b_pct	RDD285045	0.0025	Ch:RDD285045	EDGI_18	0.0025			Pending
I	Sn_ME_XRF15b_pct	RDD285069	0.006	Ch:RDD285069	EDGI_18	0.01			Pending
I	Sn_ME_XRF15b_pct	RDD285089	0.01	Ch:RDD285089	EDGI_18	0.015			Pending
I	Ti_ME_MS61r_pct	RDD284794	1.31	Ch:RDD284794	EDGI_18	1.31			Pending
I	Ti_ME_MS61r_pct	RDD284831	1.175	Ch:RDD284831	EDGI_18	1.145	2.59%		Pending
I	Ti_ME_MS61r_pct	RDD284869	0.434	Ch:RDD284869	EDGI_18	0.435	0.23%		Pending
I	Ti_ME_MS61r_pct	RDD284906	1.065	Ch:RDD284906	EDGI_18	1.06	0.47%		Pending
I	Ti_ME_MS61r_pct	RDD284944	0.361	Ch:RDD284944	EDGI_18	0.372	3.00%		Pending
I	Ti_ME_MS61r_pct	RDD284981	0.237	Ch:RDD284981	EDGI_18	0.246	3.73%		Pending
I	Ti_ME_MS61r_pct	RDD285019	0.012	Ch:RDD285019	EDGI_18	0.013			Pending
I	Ti_ME_MS61r_pct	RDD285056	0.412	Ch:RDD285056	EDGI_18	0.408	0.98%		Pending
I	Ti_ME_MS61r_pct	RDD285085	0.013	Ch:RDD285085	EDGI_18	0.011			Pending

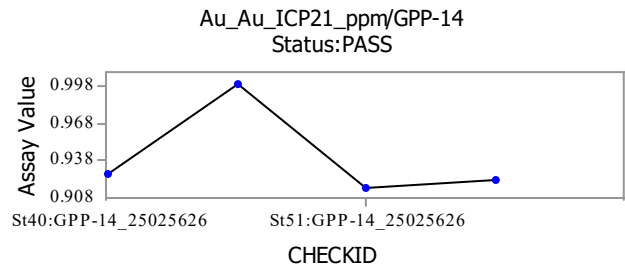
Standard: AMIS0448



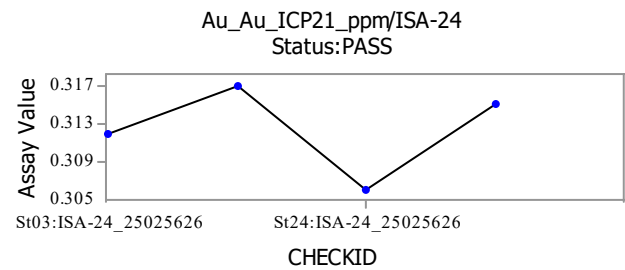
Standard: BEG-24



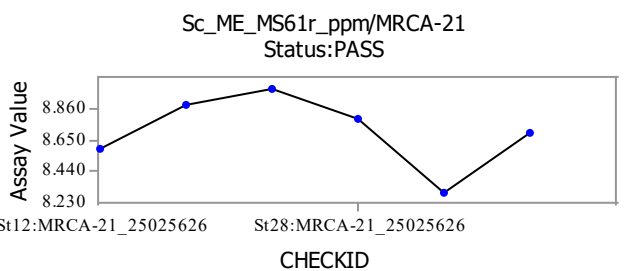
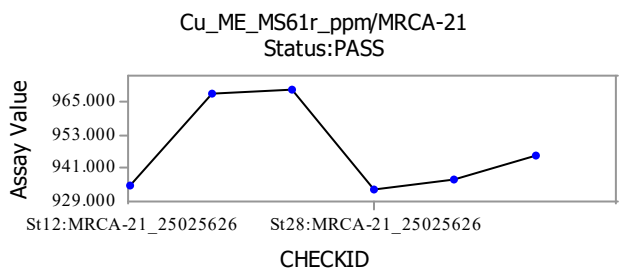
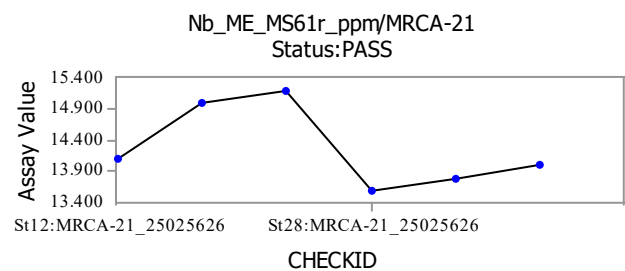
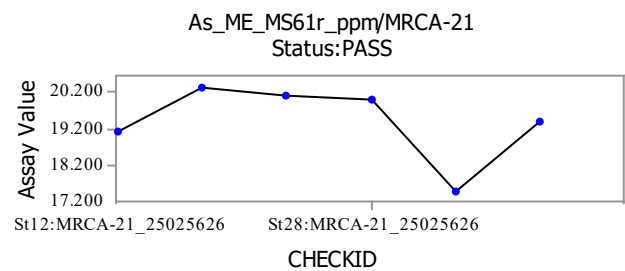
Standard: GPP-14

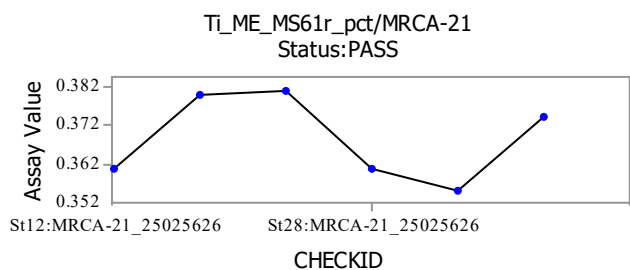


Standard: ISA-24

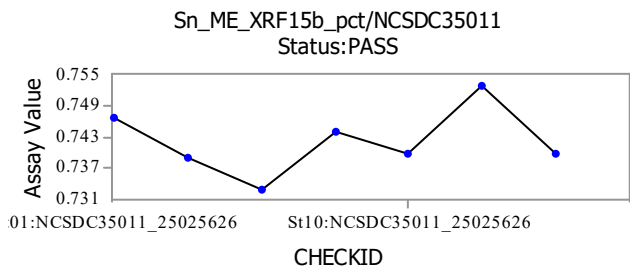


Standard: MRCA-21

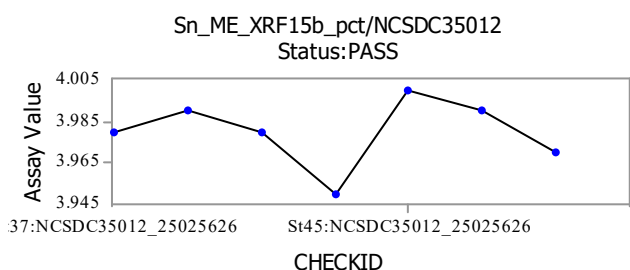




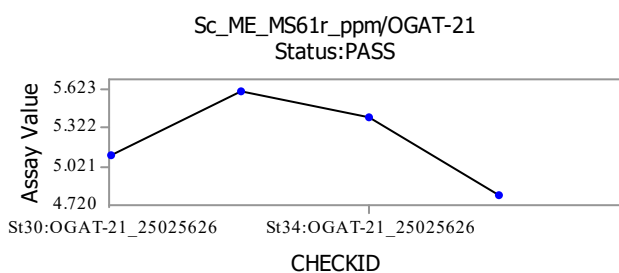
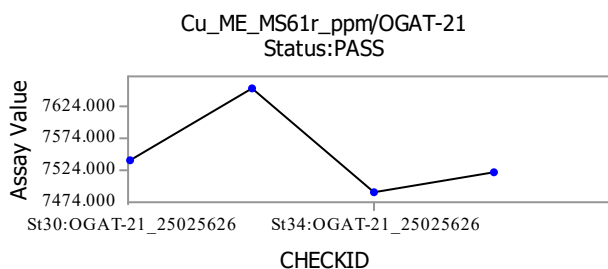
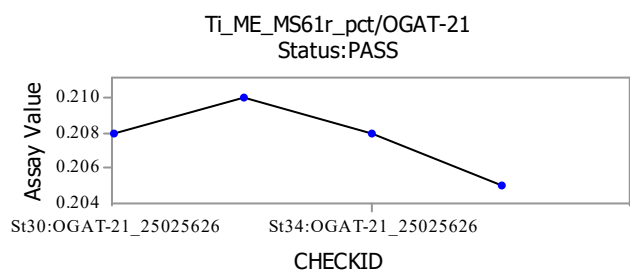
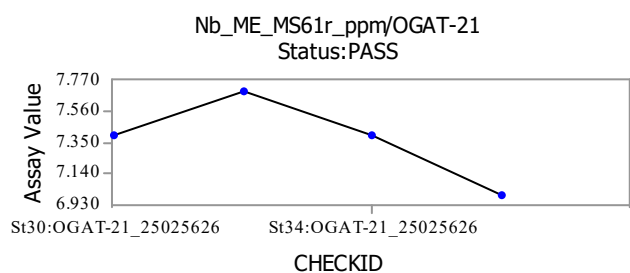
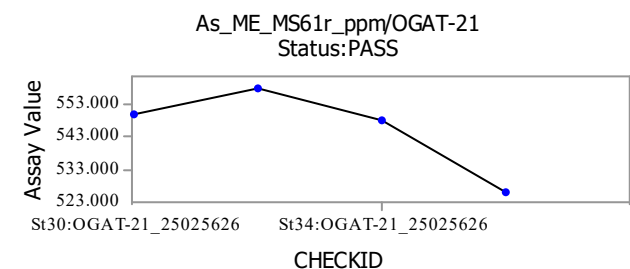
Standard: NCSDC35011



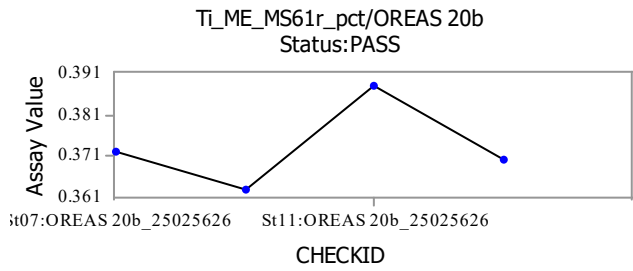
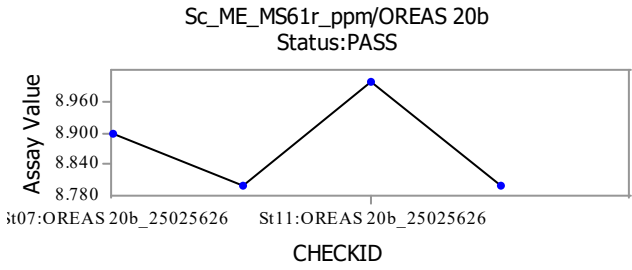
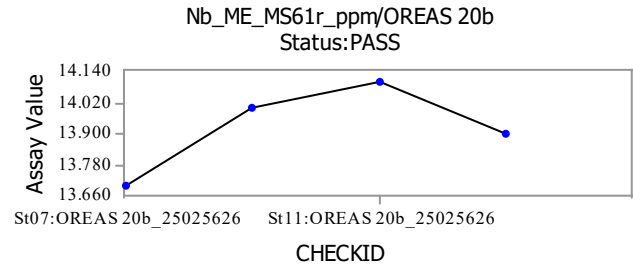
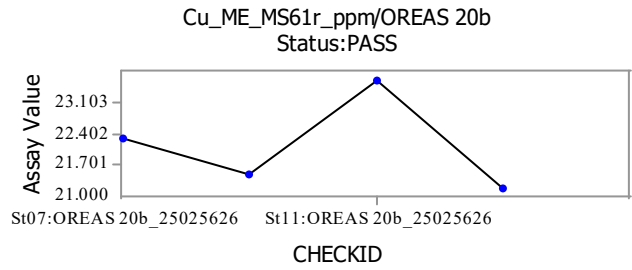
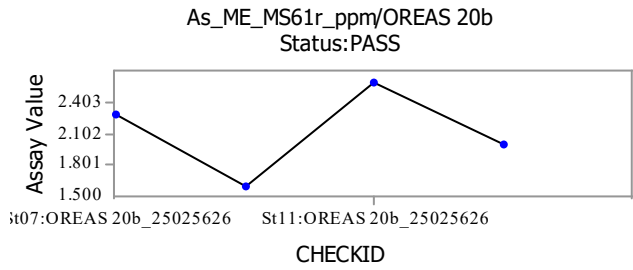
Standard: NCSDC35012



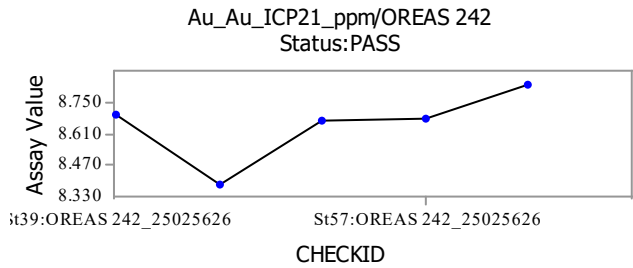
Standard: OGAT-21



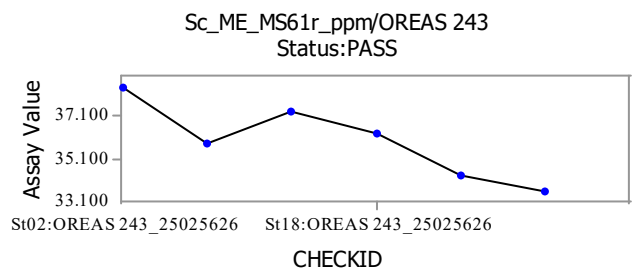
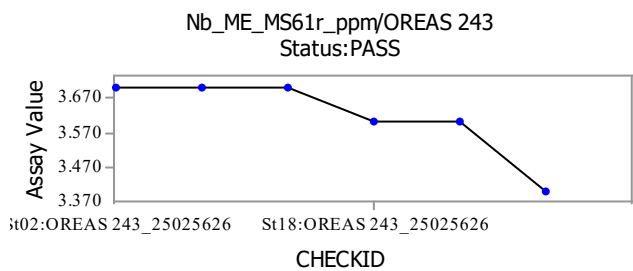
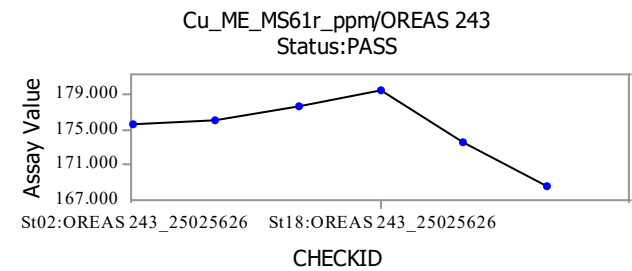
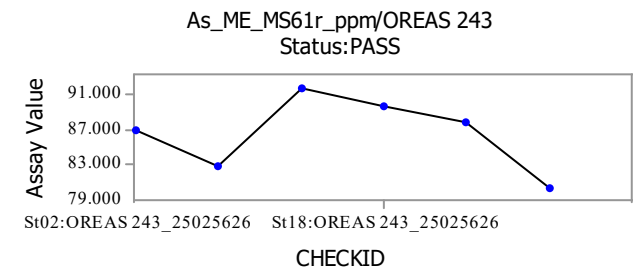
Standard: OREAS 20b

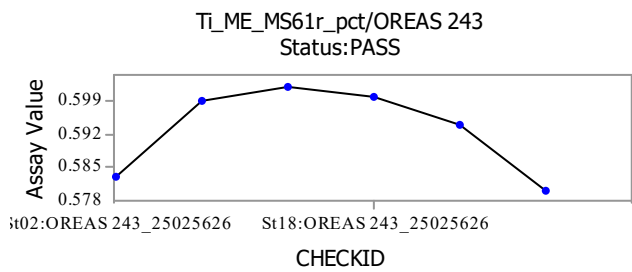


Standard: OREAS 242

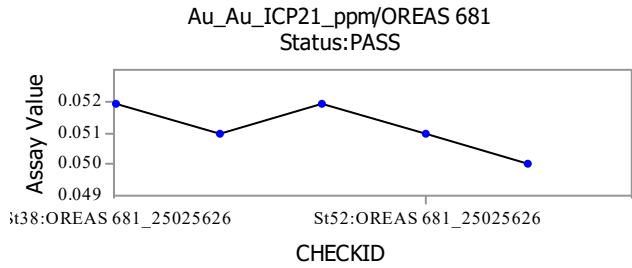


Standard: OREAS 243

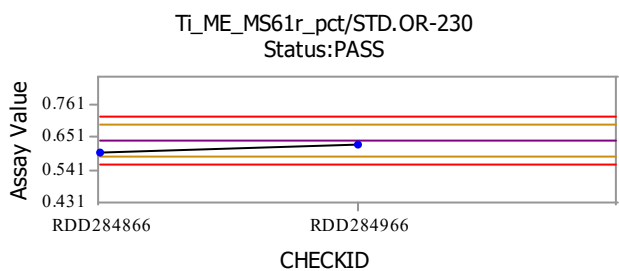
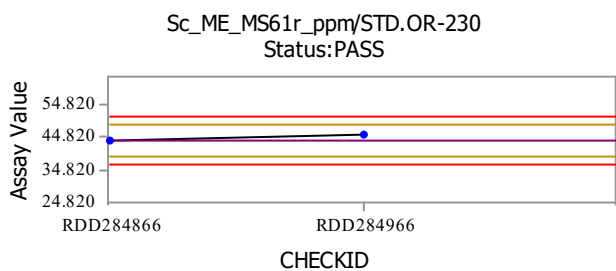
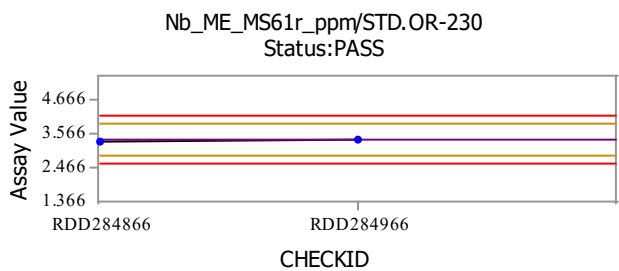
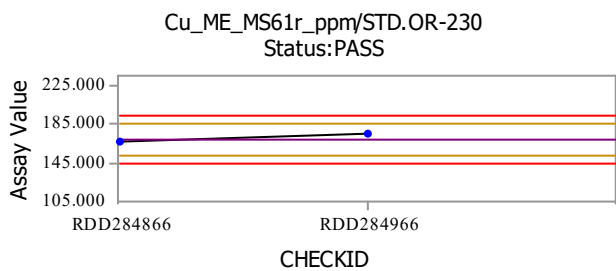
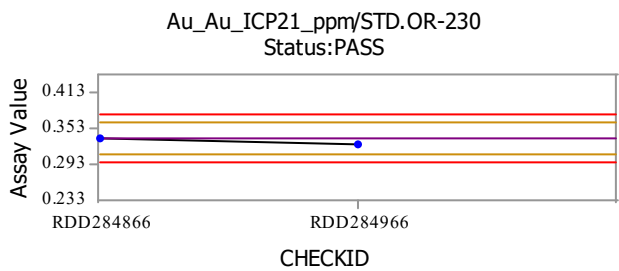
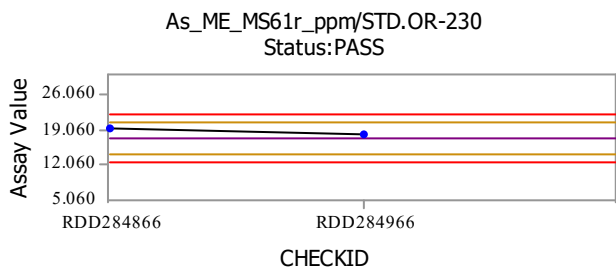




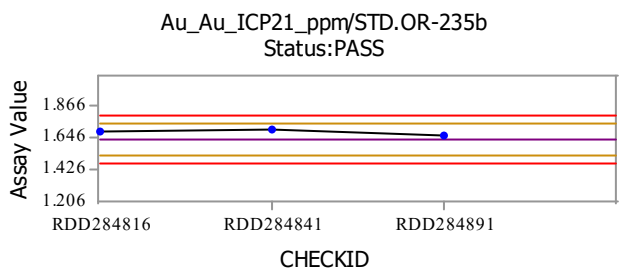
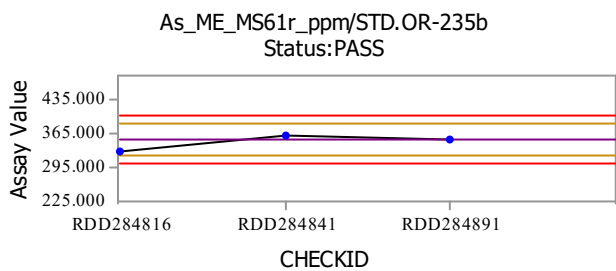
Standard: OREAS 681

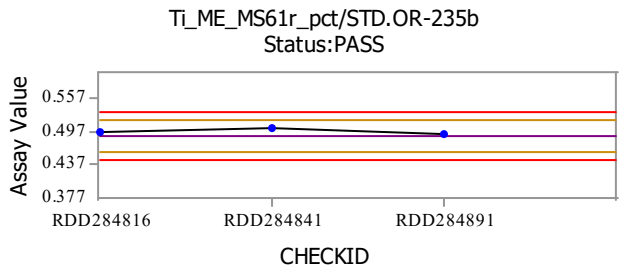
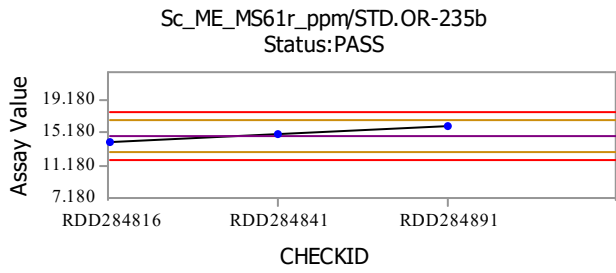
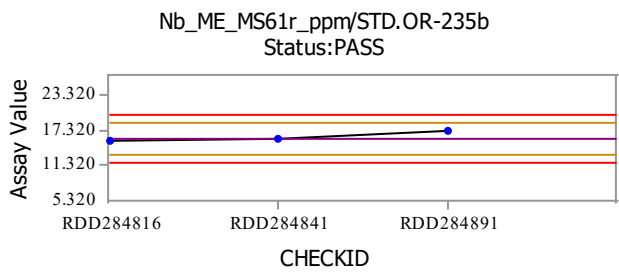
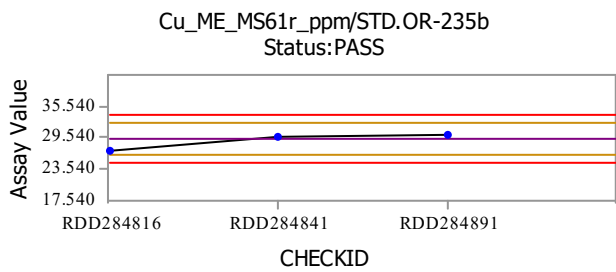


Standard: STD.OR-230

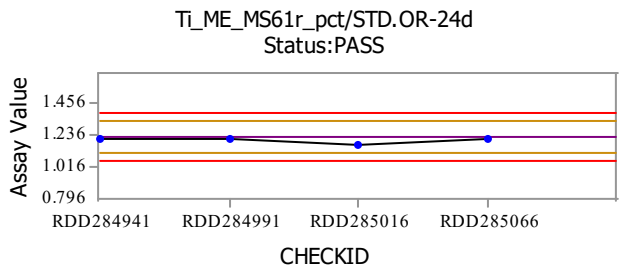
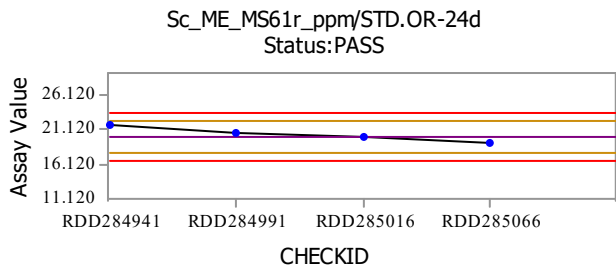
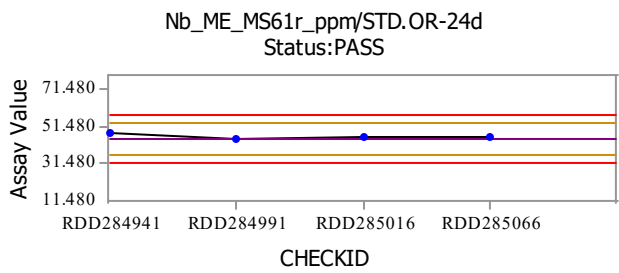
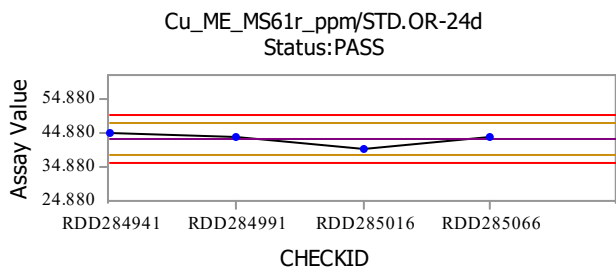
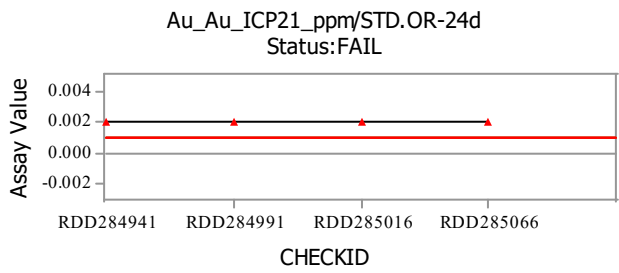
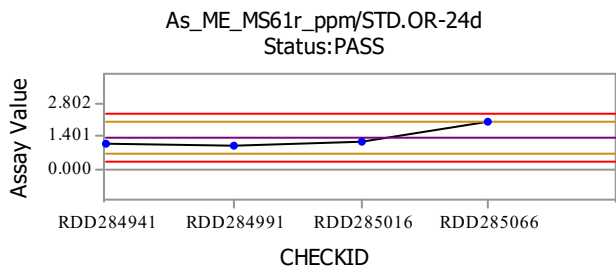


Standard: STD.OR-235b

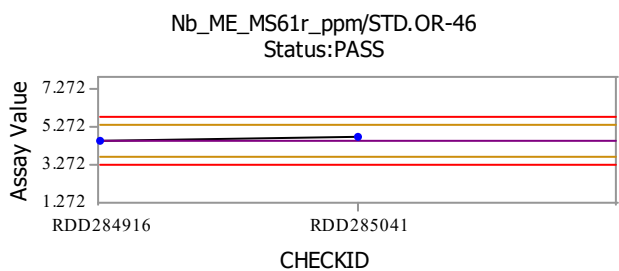
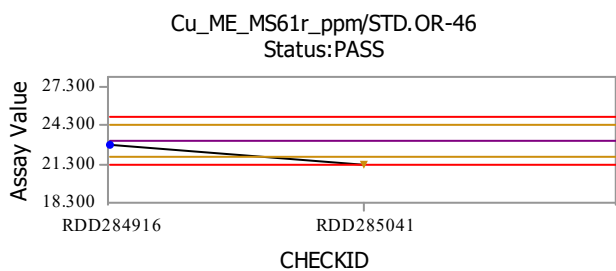
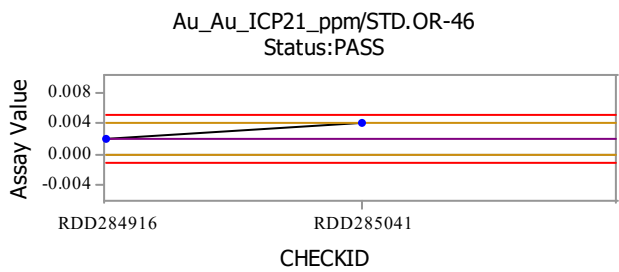
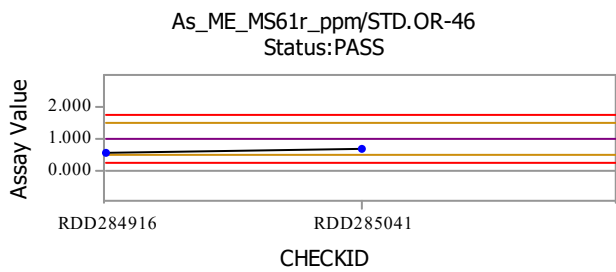


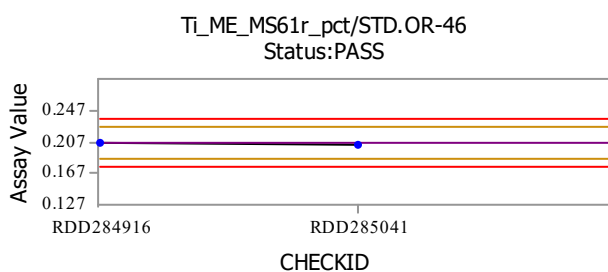
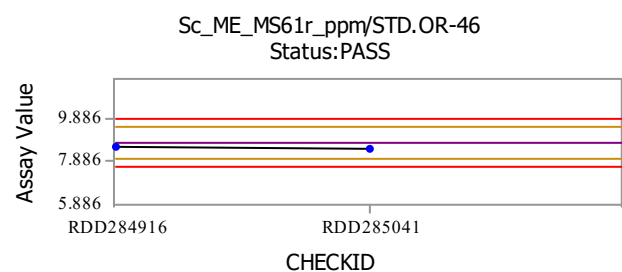


Standard: STD.OR-24d

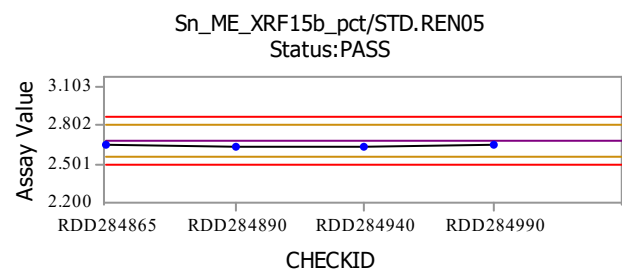


Standard: STD.OR-46

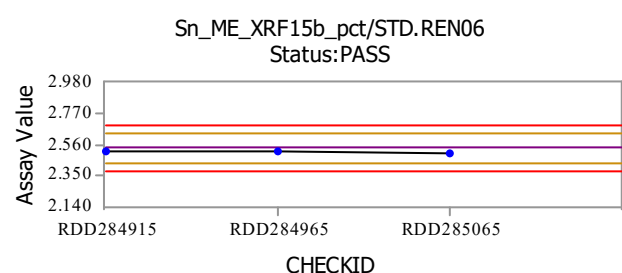




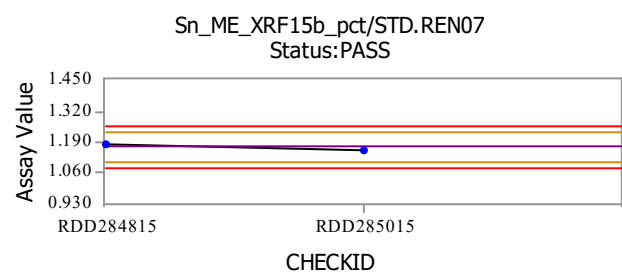
Standard: STD.REN05



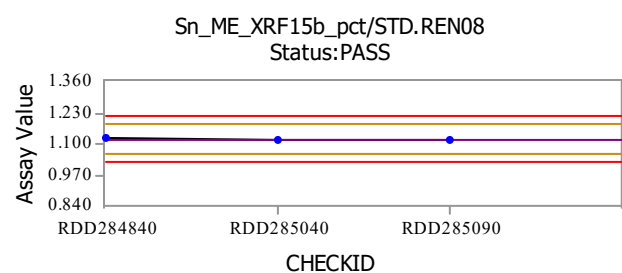
Standard: STD.REN06



Standard: STD.REN07



Standard: STD.REN08

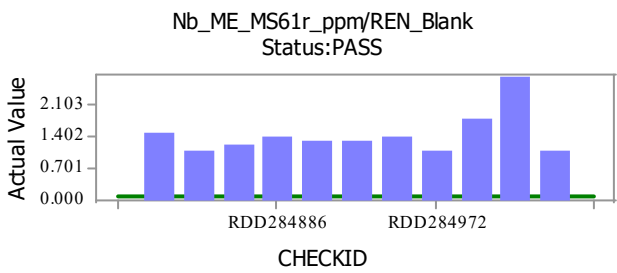
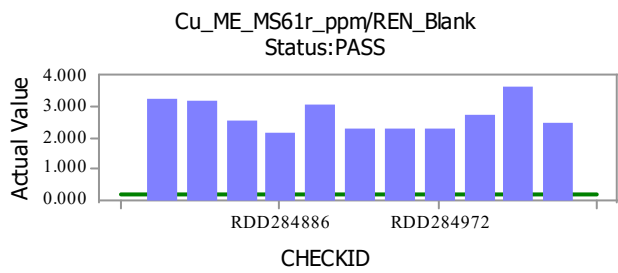
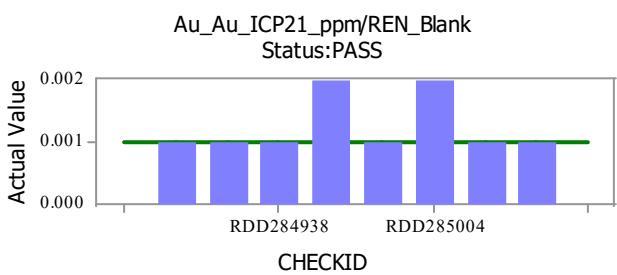
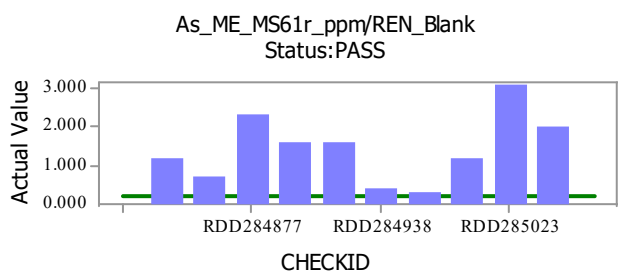


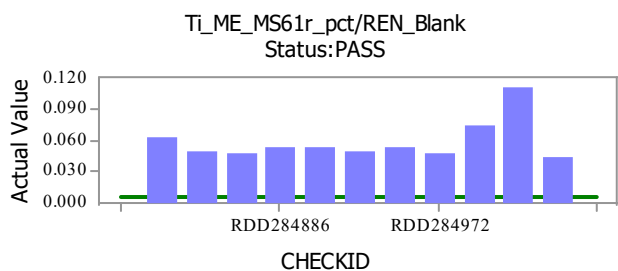
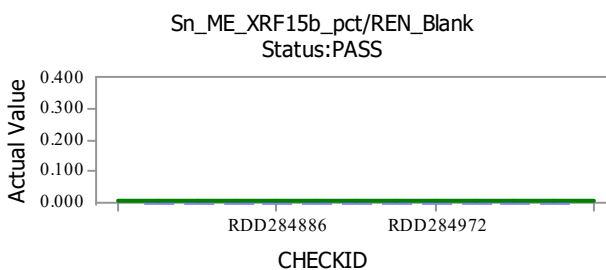
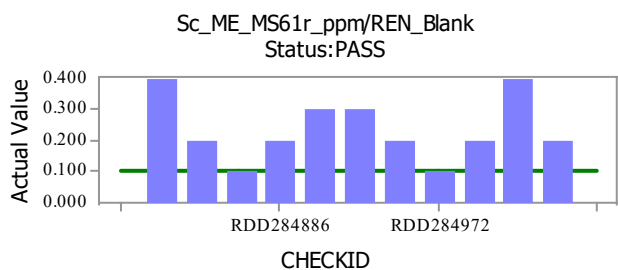
Standards Legend

- | | |
|------------------|-------------|
| — Expected Value | — Warning |
| — Error | + Threshold |
| ▲ Error | ▼ Warning |
| ● Normal | |

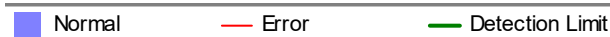
Blank: ALS_BLANK

Blank: REN_Blank

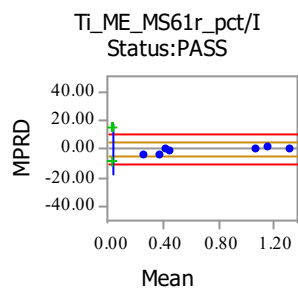
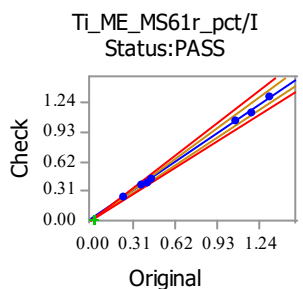
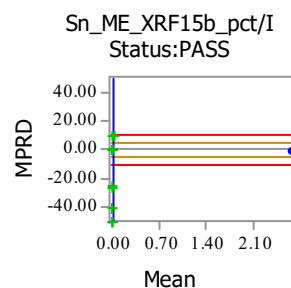
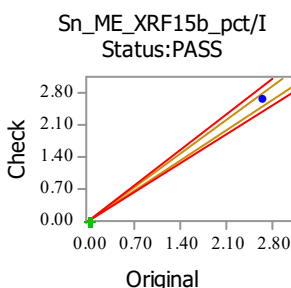
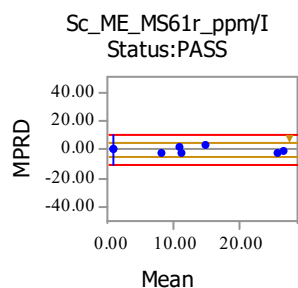
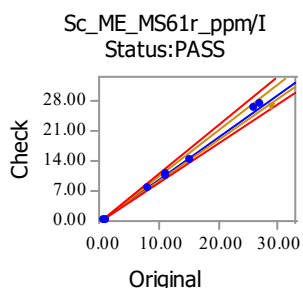
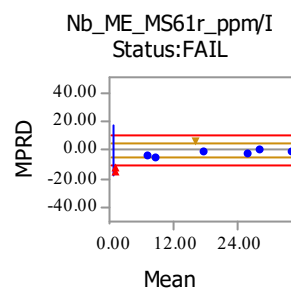
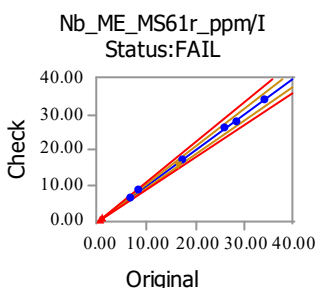
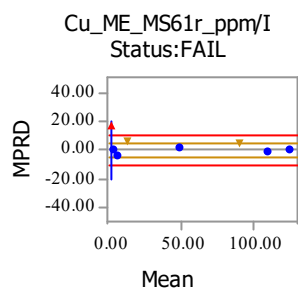
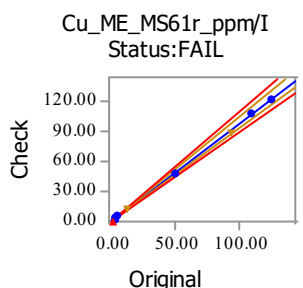
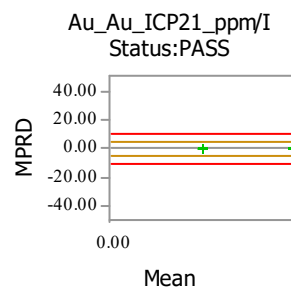
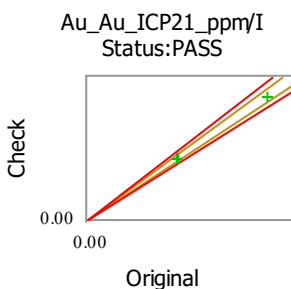
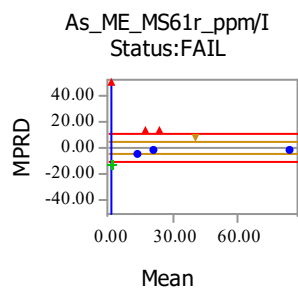
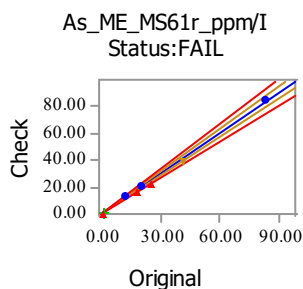




Blanks Legend



CheckStage: I



Duplicates Legend

